

Disneyland
PARIS 25

Top tips
for a Magical Trip



VALID FOR ARRIVALS FROM 21ST MARCH 2018 TO 1ST APRIL 2019



Our *top tips*

BEFORE YOU ARRIVE

The excitement doesn't have to wait until your trip. Here are a few ways you can start your holiday early:

- Visit DisneylandParis.com to check closures and opening hours as well as information on attractions, accessibility and lots more.
- Download the Disneyland® Paris mobile app for real-time information once you've arrived.

[See more on page 4.](#)

- Decide where you'll dine, Disney style:
 - Plan your breakfast
 - Choose your meal plans and your half or full board option
 - Book ahead to secure your table

[See more on page 5.](#)

- Pack the right things:
 - Comfortable clothes and shoes are a must
 - Check the weather and pack the right accessories (sunglasses or waterproofs)

[See more on page 9.](#)

MAKE YOUR STAY MAGICAL

Make your Disneyland® Paris experience unforgettable.

- Make the most of your visit with our time-saving services:
 - Enjoy a little extra magic with access to parts of the Disney® Parks before anyone else
 - Cut down on queuing time with our FASTPASS® and SINGLE RIDER services

[More info on page 11.](#)

- For the little ones:
 - Make use of our baby facilities and get healthy, balanced meals for kids in the Disney® Parks and Disney Hotels
 - Take turns on adult attractions with our Baby Switch service (it's free!)

[More info on page 12.](#)

“ I would recommend everyone to download the Disneyland Paris app! [...] It told us the wait times for rides, which ones were operating and times with locations for shows and Disney Characters meet. ”

Posted on TripAdvisor® on 16th February 2017

Your adventure starts here

How exciting — your trip to Disneyland® Paris is booked! To make your holiday shine a little brighter, we thought we'd share some of our top tips for a magical stay. Think of it as a little extra sprinkle of fairy dust on top of your trip.



BEFORE YOU GET HERE

Things to do before you arrive	4
Dine out, Disney style	5
It's easy to get to the magic	7
Checking in and checking out	8
Before you set off...	9

MAKE YOUR STAY MAGICAL

Make the most of your adventure	10
Make your trip as magical as can be	11
A world of wonder for little ones	12
Must-sees and dos	13
Adventures after dark	15
Add extra sparkle to a special occasion	16

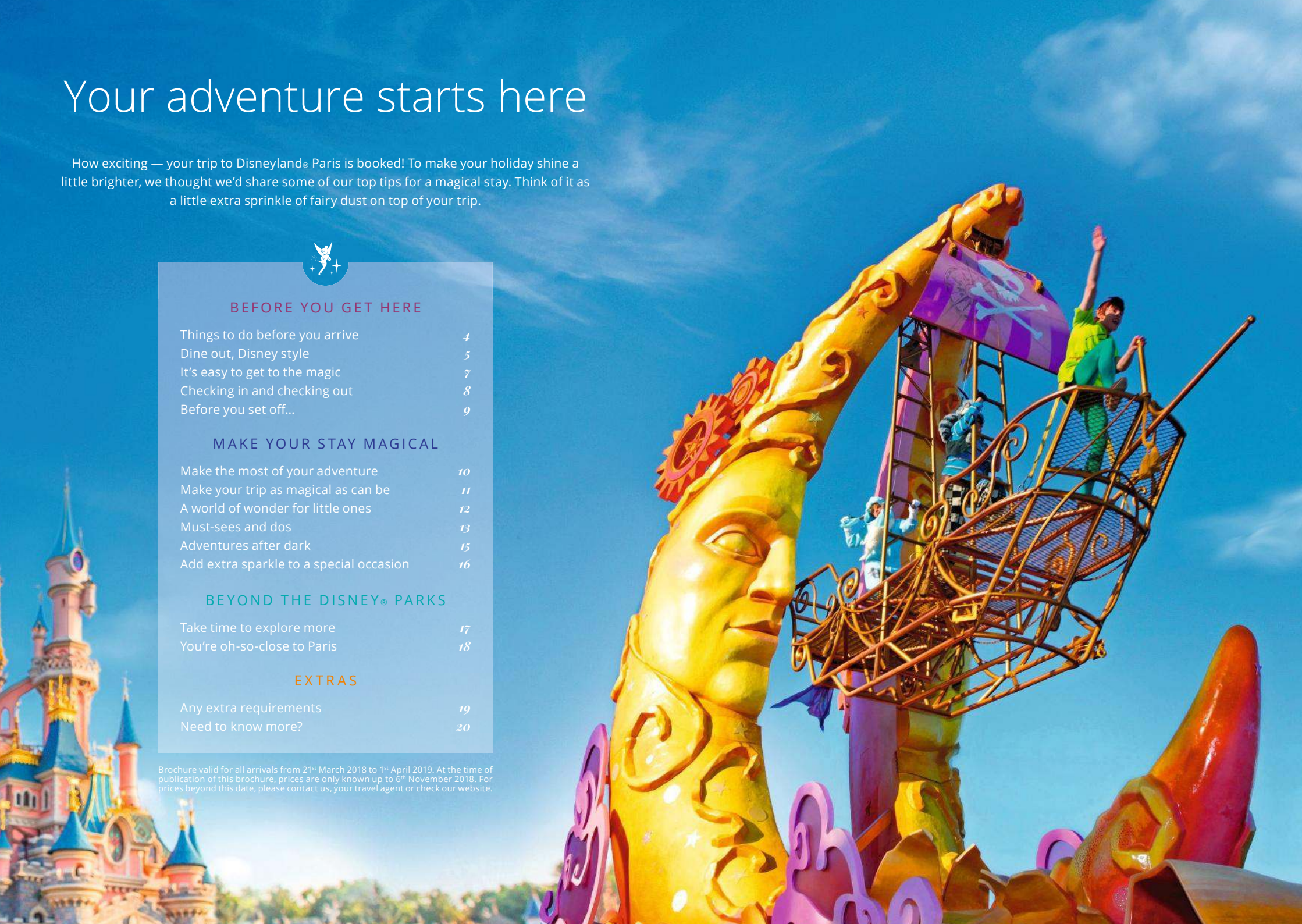
BEYOND THE DISNEY® PARKS

Take time to explore more	17
You're oh-so-close to Paris	18

EXTRAS

Any extra requirements	19
Need to know more?	20

Brochure valid for all arrivals from 21st March 2018 to 1st April 2019. At the time of publication of this brochure, prices are only known up to 6th November 2018. For prices beyond this date, please contact us, your travel agent or check our website.





Things to do before you arrive

Your magical trip to Disneyland® Paris is twinkling in the distance, but the excitement doesn't have to wait until you arrive. Here are a few fun ways you can start your holiday early.

DOWNLOAD THE DISNEYLAND® PARIS APP

Get a glimpse of what's in store with our magical mobile experience (1). Available for iPhone® and Android™, our official Disneyland® Paris mobile app(1) brings all of the spectacular sparkle to you — before you've even left home. And thanks to our free Wifi(2) around the Resort, you can easily download it once you're here too.

- Find Disney® Parks opening hours, accessibility information, descriptions of attractions and much more



DOWNLOAD THE OFFICIAL FREE APP FOR DISNEYLAND® PARIS!



- Access real-time information about attractions — like queuing times for Disneyland® Park and Walt Disney Studios® Park
- Find what you're looking for quickly with maps that show your location and the attractions, restaurants and shops near you
- See daily schedules for parades and entertainment



CHECK WHAT'S OPEN

We're always adding a little more shine and sparkle to Disneyland® Paris, so that every time you visit there's something new to explore. We'll be busy at work refurbishing some of our attractions, so it's worth checking on DisneylandParis.com which ones we're working on. But while we're beavering away, you can enjoy over 50 attractions, parades and shows that have made Disneyland Paris the number one tourist attraction in Europe.



FOLLOW US AND START DREAMING

For a daily dose of magic before, during and after your Disneyland Paris holiday, follow us on:

@DisneylandParis
 @DisneyParis_EN



(1) Some app features require location data as well as a Wifi or mobile carrier data connection. Message, data and roaming rates may apply. (2) This feature is only available once you're in the Disney Parks. (3) Free Wifi is being gradually deployed through Disneyland® Paris; some areas of the Disney® Parks may not yet be equipped with this service at the time of your stay, please check onsite for details.



Dine out, *Disney style*

Treat your taste buds to fine French cuisine, hearty Italian feasts and authentic American bites — to name just a few. With a choice of over 50 restaurants and 4 dining experiences (meals with Disney Characters, table service, all-you-can eat buffet and quick meals) across Disneyland® Paris, you'll find the perfect place to unwind from a day of shimmering shows and jaw-dropping attractions.

BOOK BEFORE YOU ARRIVE

Our Meal Plans are the perfect way to try out our restaurants and enjoy memorable mealtimes with Disney Characters. ①

BREAKFAST MEAL PLAN

Includes a delicious breakfast buffet⁽¹⁾ in your Disney® Hotel restaurant. ②

Price example: Disney's Hotel Cheyenne or Disney's Hotel Santa Fe

Adult: £17 (€19) / Child*: £12 (€14), per night booked⁽²⁾

HALF BOARD MEAL PLAN

Breakfast + 1 meal

Includes a breakfast buffet⁽¹⁾ in your Disney Hotel restaurant + 1 meal, valid for lunch or dinner, per person and per night booked.

FULL BOARD MEAL PLAN

Breakfast + 2 meals

Includes a breakfast buffet⁽¹⁾ in your Disney Hotel restaurant + 2 meals, valid for lunch and dinner, per person and per night booked.



CHOOSE STANDARD, PLUS OR PREMIUM

Once you've decided on Half Board or Full Board, choose between our Standard, Plus or Premium options. Each one gives you access to an increasing number of restaurants and food options in the Resort.

Price example for Standard Half Board Meal Plan

Adult: £34 (€39) / Child*: £25 (€28), per night booked



BOOK AHEAD TO RESERVE A TABLE

To keep mealtimes easy and to make sure you get a table in the restaurant you fancy, we highly recommended booking in advance (even if you have a Meal Plan, as it doesn't guarantee a table). Call our Dining Reservation Service up to two months before your trip on:

+33 1 60 30 40 50
(international call rates apply)

Remember to let us know if you have any special dietary requirements when you call.

*Children 3-11 yrs. • Half Board and Full Board Meal Plans are only available if you stay in a Disney® Hotel. • The same type of Breakfast, Half Board and Full Board Meal Plans are sold for the entire length of stay (based on the number of nights) and for the entire party size (from 3 years) before arrival, in combination with a package. • If you have received free Full/Half Board as part of a special offer package, your breakfast will be served at one of our counter service restaurants located in the Disney® Parks unless otherwise stated in the offer terms and conditions. The name and location of the restaurant will be communicated to you upon arrival. • You will receive your vouchers upon arrival at your Disney Hotel. • Meal Plan options and prices depend on the meal consumption date; if this date falls beyond the period of validity of this guide (21st March - 6th November 2018) please contact us for the applicable prices and conditions. • Limited to 1 meal coupon per person per meal. • If you stay in a Disney Hotel Suite or Club room, other Meal Plan prices apply, please contact us or your travel agent for details. (1) Disney Davy Crockett Ranch: takeaway breakfast. (2) The price may vary depending on the category of your Disney Hotel. Breakfast is already included in your package if you book a Disney Hotel Club room or a Suite. Other options are available onsite at your hotel, in the Disney® Parks or at Disney® Village if you don't pre-book a Meal Plan.



Take your pick

“ We got a food package on our visit and this worked perfectly both in a financial sense and pre-booking our table meant no wait times for food. ”

Reviewed May 6, 2017

		STANDARD	PLUS	PREMIUM	
		Half and Full Board	Half and Full Board	Half and Full Board	
BREAKFAST	BUFFET	In your Disney® Hotel ⁽¹⁾	✓	✓	
	BUFFET WITH DISNEY CHARACTERS	Plaza Gardens Restaurant at Disneyland® Park		✓	
Available restaurants		More than 5	More than 15	More than 20	
LUNCH AND/OR DINNER	BUFFET	In your Disney Hotel ⁽²⁾	✓	✓	
	1 SOFT DRINK WITH YOUR MEALS	In the Disney® Parks and Disney Village®	✓	✓	
	TABLE SERVICE			✓	
	WITH DISNEY CHARACTERS	Set menu		✓	
		À la carte		✓	
		Auberge de Cendrillon in Disneyland Park		✓	
		Inventions ⁽³⁾ in the Disneyland® Hotel		✓	
PRICE	DINNER SHOW	Buffalo Bill's Wild West Show... with Mickey and Friends! (2 nd category) at Disney Village		✓	
	HALF BOARD Breakfast + 1 meal per person, per night booked	Adult	£34 (€39)	£46 (€52)	£73 (€83)
		Children (3-11 yrs)*	£25 (€28)	£31 (€35)	£49 (€56)
	FULL BOARD Breakfast + 2 meals per person, per night booked	Adult	£52 (€59)	£63 (€72)	£102 (€116)
Children (3-11 yrs)*		£37 (€42)	£44 (€50)	£66 (€75)	

*Dedicated children's menus. For children under 3 years, please contact us. • The à la carte menu includes a starter, a main course and a dessert except for California Grill at Disneyland Hotel, Walt's - an American Restaurant at Disneyland Park and Bistrot Chez Rémy at Walt Disney Studios® Park where a set menu is proposed. Children's menu only available as a set menu. (1) Except if you have received free Half/Full Board as part of a special offer package. See notes on the previous page. (2) If you choose a Meal Plan available at your hotel's restaurant. (3) No lunch on Sunday.



It's easy to get to the magic

Whether travelling by train, plane, car or flying over on Aladdin's carpet, getting to Disneyland® Paris has never been easier. We take care of all the tricky bits, so you can relax and get ready for a once-in-a-lifetime experience. Make your journey as effortless as possible by checking out our handy travel tips.

BY PLANE

If you're arriving from Paris-Charles de Gaulle or Orly airports, you can hop on board the Magical Shuttle bus or rent a car with our partner Hertz. Or you can get here via high-speed train (TGV) from Paris Charles de Gaulle airport Terminal 2 to Marne-la-Vallée/Chessy station.

Easy, straightforward transfers with Magical Shuttle

For simple and frequent transfers take the Magical Shuttle airport bus, straight to the heart of the magic.

Visit MagicalShuttle.com for timetables, and contact us or your travel agent if you'd like to book.

Price one way from/to Paris Charles de Gaulle and Orly • Adult: £20 (€23)⁽¹⁾⁽²⁾ / Child (3-11 yrs): £9 (€10)⁽¹⁾⁽²⁾

Travel at your own pace with Hertz

Car rental gives you a more flexible way to travel over to the Resort. Please contact us or your travel agent if you'd like to book.

Price per day, per car Category A: from £28 (€32)⁽¹⁾⁽³⁾

BY CAR

Take the A26 from Calais, change to the A4 and drive straight for three hours until you reach the glittering lights of Disneyland Paris.

Using a Sat Nav? You'll need this:

Latitude: 48.876077 - Longitude: 2.79646

Disney® Parks Guest Parking

Street: Boulevard de Parc • Town: Serris/Coupvray

• Zip code: 77700 • Country: France

Looking for a petrol station?

Good news - petrol stations are available next to Disney's Hotel Santa Fe and at Val d'Europe shopping centre, a few minutes drive from the Resort.

Park for free

All hotels are equipped with free car parks (except at Adagio Marne-la-Vallée Val d'Europe where an extra charge applies). If you are staying in one of our hotels, you can also access the Disney® Parks Guest Parking for free.

BY TRAIN

Head to Marne-la-Vallée/Chessy station, it's an easy two-minute walk from the gates of the Disney Parks.



SAVE TIME WITH DISNEY EXPRESS⁽⁴⁾

Head straight to the magic with our hotel check-in and luggage service. Give us your bags and go straight to the Disney Parks without having to check-in to your hotel first.

- Receive your hotel check-in documents in advance
- Have your luggage transferred directly to your hotel⁽⁵⁾ on arrival (and to the station when you leave)
- Receive your Disney Park tickets and go straight to the magic!

Price per person return (from 3 yrs): £14 (€14)⁽¹⁾

(1) Prices are set until 6th November 2018. Prices after this date will be confirmed later in the season. (2) Price is subject to change during the season. Free for children under 3 years, but individual seats are not guaranteed. (3) For a minimum 3-day car rental in Low season. For further information on Hertz prices, please contact us or check our website. (4) Disney Express: counter is located on the top floor of Marne-la-Vallée/Chessy station and is open from 8am to 9.30pm, 7 days a week. (5) Service not available at Disney's Davy Crockett Ranch and Villages Nature® Paris.



Checking in and checking out

Here are some useful tips about your arrival and departure, so your check-in and check-out are super quick and easy — and you have more time to discover the dazzling world of Disneyland® Paris.

HOTEL CHECK-IN AND CHECK-OUT

You can check-in to your hotel anytime on your day of arrival. Hotel rooms are available from 3pm (or 4pm at Disney's Davy Crockett Ranch and Radisson Blu Hotel) and must be vacated by 11am (or noon at Radisson Blu Hotel and 10am at Villages Nature® Paris) on the day of departure. If you arrive earlier or leave later, you can leave your luggage in the luggage room and use the safety deposit box at the reception (except at Disney's Davy Crockett Ranch, B&B Hotel, Adagio Marne-la-Vallée Val d'Europe and Villages Nature® Paris) without paying a penny.

When you check in, you'll get:

- The key to your room
- Your admission tickets to the Disney® Parks
- Vouchers for anything you have reserved

And if you stay in a Disney® Hotel, you'll also get:

The Disney® Hotel Easy-pass, giving you access to the Disney Parks Guest Parking (for free), the pool and fitness club at your hotel (if it has one) and Disney Parks during Extra Magic Time* (see page 11 for details). This handy little card also allows you to charge a wide variety of purchases directly to your hotel bill. ⓘ

For further details and conditions, just ask at the reception of your Disney Hotel.



DOWNLOAD YOUR REGISTRATION CARD

To save time and make your check-in nice and easy, download your Disney Hotel registration card directly from the confirmation email we sent you and fill in the form!



CLICK HERE TO DOWNLOAD
YOUR DISNEY HOTEL
REGISTRATION CARD



HEAD STRAIGHT TO THE DISNEY® PARKS

All the Disney® Hotels (except Disney's Davy Crockett Ranch) are within walking distance of the Disney Parks — but if you prefer, you can take our free Disneyland® Paris shuttle service. They leave every 12 minutes and run 7 days a week between 6.30am and 11pm, stopping opposite the SNCF station at the entrance to Disney Village®. A regular shuttle bus service runs also between the specially handpicked hotels or Villages Nature® Paris and the SNCF station..

Please note: shuttles do not go to Disney's Davy Crockett Ranch or Disneyland® Hotel.
Villages Nature® Paris: shuttle bus service to the Disney Parks subject to an extra charge.

* Depending on your date of visit, the duration of Extra Magic Time may vary, as may the number of Disney® Parks in which it applies. Please contact us or check our website for more information.



Before you set off...

In the excitement of it all, it's easy to forget things or leave packing until the last minute. So here are a few handy bits to remember.

CLOTHES TO PACK

- Comfortable clothes and shoes, as you'll be walking far and wide to see all of our magical lands (remember to avoid flip flops for rollercoasters and attractions)
- Warm or light clothes, depending on the weather (in Marne-la-Vallée/Chessy it can be a little up and down)
- The essentials – sunscreen, hats, sunglasses or waterproofs and umbrellas ⓘ
- A swimsuit (if your hotel has a pool, of course)

“Make use of the water fountains in the Parks.”

Reviewed October 9, 2017.



ESSENTIALS TICK LIST

- A backpack is ideal to carry around everything you need in the day
- Don't forget to stay hydrated! We've got lots of water fountains so you can bring your gourd to fill, or you can buy water bottles at all our restaurants and food trucks
- A photo or video camera to capture the most magical of moments (plus all of the batteries and charging wires)
- And most importantly of all, your ID or passport!

PS - leave your selfie sticks at home, as they are not allowed in the Resort (sorry)





Make the most of your adventure

Make your Disneyland® Paris adventure unforgettable! Meet much-loved Disney Characters for magical moments you'll cherish forever, and capture them with Disney Photopass™+.

Breakfast with Disney Characters — Plaza Gardens Restaurant, Disneyland® Park

Enjoy a delicious buffet while Disney Characters stop for a catch-up (as well as lots of photos and autographs). ①

Price per adult: £34 (€39) / Price per child⁽¹⁾: £31(€35)

Lunch with Disney Princesses — Auberge de Cendrillon, Disneyland Park

Feast on a royal meal and meet with Disney Princesses.

Price per adult: £68 (€77) / Price per child⁽¹⁾: £40(€45)

Lunch with Disney Characters — Inventions, Disneyland® Hotel

Tuck into fanciful dishes from all over the globe while famous Disney Characters pop in for some photos and autographs.

Price per adult: £57 (€65) / Price per child⁽¹⁾: £31(€35)



Buffalo Bill's Wild West Show... with Mickey and Friends! — Disney Village®

After a day of adventure, join Mickey and Friends for a rootin' tootin' dinner-show with cowboys and indians. ②

90 min. show, Friday to Tuesday at 6.30 pm and 9.30pm⁽²⁾

• Pre-book and save up to 15%⁽³⁾ on 2nd Category adult prices

21st Mar - 6th Nov 2018 (except the dates below)

Price per adult: £48 (€55) / Price per child⁽¹⁾: £38(€43)

• Regular prices at gate apply to the dates below

30th Mar - 7th, 27th - 29th Apr, 27th Jul - 25th Aug, 19th Oct - 3rd Nov 2018

Price per adult: £57 (€65) / Price per child⁽¹⁾: £42(€48)

• 1st category supplement (to be added to the 2nd category price)

Per person (from 3 yrs): £13 (€15)

As live animals are used during this show and the cavalcades raise dust, it is not suitable for people suffering from asthma or other respiratory disorders. (1) Children 3-11 yrs inclusive. For children under 3 years, please contact us. (2) Closed on 1st January, Wednesdays and Thursdays, except on certain dates; please check at time of booking. (3) 15% saving on 2nd category adult price calculated versus prices at gate. This discount is not combinable with any other offer or reduction. These prices apply if you book this option with your package. Prices at gate (2nd category): €65 (approx. £57) per adult and €48 (approx. £42) per child. Prices at gate and saving based on the set exchange rate €€/£ stated in our Booking Terms & conditions on p. 75 of the official brochure available on DisneylandParis.com.



PRE-BOOK YOUR DISNEY PHOTOPASS™+



Book Disney PhotoPass™+ before you arrive and capture your magical experiences.

- Collect and keep all the souvenir photos taken by our professional photographers.
- View, download and share your pictures on our Disney PhotoPass™+ website or with the Disneyland® Paris PhotoPass™+ App.
- Create personalised goodies using your photos on DisneyPhotopass.eu

Pre-book this option or, on arrival you can also purchase your PhotoPass™+ at any Disney photo sales point or selected souvenir boutiques. Specific conditions apply; please contact us or your travel agent. The online and mobile services are operated by our Official Partner Fujifilm.



Make your trip *as magical as can be*

With unforgettable moments, dazzling parades and amazing attractions around every corner, there's so much to see and do at Disneyland® Paris. Here are some handy ways to make the most of it all, ensuring your trip is as magical as can be.


THE DISNEY DIFFERENCE

Stay at a Disney® Hotel and you'll benefit from a world of exclusive extras.

ENTER THE DISNEY® PARKS BEFORE EVERYONE ELSE AND MEET DISNEY CHARACTERS

By staying in a Disney® Hotel, you'll get exclusive access to parts of the Disney® Parks and extra time to meet up with Disney Characters. With Extra Magic Time⁽¹⁾, pose for perfect pictures, ask for autographs and enjoy attractions before the official opening times at both Disney Parks.

MEET THE DISNEY CHARACTERS IN YOUR DISNEY® HOTEL

Share the company of Disney Characters at six Disney Hotels⁽²⁾ — so you can concentrate on attractions and shows when you get to the Disney® Parks! 




YOU SHOP, WE'LL DROP

With our Shopping Service, you can hit the shops for lovely souvenirs until 3pm without having to carry a single bag. We'll deliver your shopping to your hotel or Disney Village®, so it's ready for you to pick up from 6pm⁽³⁾.

PLAN YOUR VISIT

When you get to the Disney Parks, be sure to grab your park map ('Guide to the 2 Disney Parks') as well as a "Programme". Plan ahead and map out your must-see attractions, shows, parades and Disney Character encounters, so that you don't waste a single moment of magic!

SAVE TIME WITH FASTPASS® AND SINGLE RIDER

Our FASTPASS® service helps you cut down on queue times at some of the most popular attractions in the Disney® Parks . It gives you a specific return time to enjoy the attraction via the FASTPASS® entrance⁽⁴⁾. And with SINGLE RIDER you can jump ahead via the special entrance if you're willing to ride separately from your group⁽⁵⁾.



⁽¹⁾ Depending on your date of visit, the duration of Extra Magic Time may vary, as may the number of Disney® Parks in which it applies. Please contact us or check our website for more information. ⁽²⁾ Not available at Disney's Davy Crockett Ranch. ⁽³⁾ Service available in most of the Disneyland® Paris hotels. Ask for details in shops. ⁽⁴⁾ You may only have one FASTPASS booking at a time. This service is only available with a Park ticket valid for the same day. ⁽⁵⁾ This service does not give immediate boarding or a choice of seat and vehicle.



A world of wonder for little ones

Your family fairytale starts here. From the magical moment you arrive, we aim to bring your little one's dreams to life. Here are our special services and handy hints for families with children, so that every visit is as stress-free as possible.

ATTRACTIONS, SHOWS AND DISNEY CHARACTERS

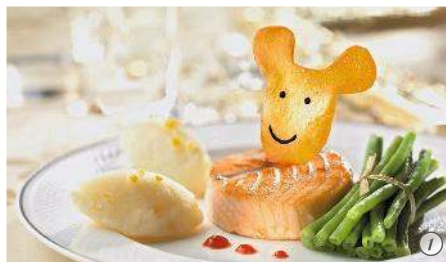
Have your autograph book ready, because Mickey's friends are out and about in both Disney® Parks. With more than 20 attractions and shows perfect for kids in both Disney Parks (just look for the “fun with little ones” icon in your 'Guide to the 2 Disney Parks'), they'll be jumping for joy. Remember that some attractions are subject to height restrictions.

BABY SWITCH

This free service allows mum and dad to take turns on adult attractions, without having to wait in line a second time! Ask for details at attraction entrances.

HEALTHY FOOD FOR LITTLE ONES

All our Disney® Hotels and Disney Parks offer family-friendly restaurants with a wide choice of healthy, balanced meals for kids (all these restaurants are included in our Full-Board and Half-Board Meal Plans). Baby food is also available in our buffet and table service restaurants — and you'll find high chairs in most of our restaurants, too. ①



BABY FACILITIES IN THE DISNEY® HOTELS

If you're visiting with a baby, we'll be happy to provide you with a cot, bottle warmer, bed rails and step stool if you need them (just let us know when you book). You can buy baby food jars and nappies in the Disney shops located in the Disney Hotels, and if you need our baby-sitting service just chat to your hotel reception.

FIRST AID CENTRES IN THE DISNEY® PARKS

If you need medical assistance, head to one of our First Aid posts — open 7 days a week. All of our First Aid staff are fully qualified and equipped to provide you with the necessary care in case of emergency.



BABY FACILITIES IN THE DISNEY PARKS

Baby care rooms are available in both Disney Parks, and are fully equipped with bottle-warmers and baby change facilities ☺. Baby food jars and nappies are available to buy and pushchairs can be rented in both Disney Parks.





Must-sees and dos

With so many amazing adventures to be had at Disneyland® Paris, it can be hard to know where to start. To get you in the mood for magic, we've rounded up a few of the attractions you simply can't miss.

FUN FOR LITTLE ONES

Fantasyland in Disneyland® Park and Walt Disney Studios Park® hold lots of attractions for young dreamers, including opportunities for your little ones to share a special moment with much-loved Disney Characters. Here are some unmissable highlights:

Disneyland Railroad — Embark on a relaxing tour on-board an authentic steam-powered train

Sleeping Beauty Castle — Dream with your eyes wide open in front of this icon of Disneyland Park

Slinky Dog Zigzag Spin — See your pups go barking mad for this zigzag-a-coaster

Disney Junior Live on Stage! — Watch some beloved Disney Channel Characters spring to life on stage

Stitch Live! — See Stitch like never before in an out-of-this-world experience

Meet Mickey Mouse ① — Head backstage to meet magician Mickey in between shows

Princess Pavilion — A royal encounter with one of our Disney Princesses



BIG THRILLS

At Disneyland Park, thrill seekers will be swept off their feet — and in Walt Disney Studios Park, only the bravest will dare to embark on some of our biggest attractions. Here's a sneak peek:

Star Wars™ Hyperspace Mountain ① ② — Blast off on an epic takeover of a classic space attraction

Big Thunder Mountain ③ — Hurtle through an abandoned gold mine at hair-raising speed

Indiana Jones™ and The Temple of Peril ④ — Embark on a daring mine carriage ride that loops you right into the heart of ancient ruins

The Twilight Zone Tower of Terror™ — Plummet 13 floors aboard an elevator that travels faster than the speed of gravity

Crush's Coaster ② — Plunge through the East Australian current aboard a spinning turtle shell

Rock 'n' Roller Coaster starring Aerosmith — Strap in for a loop-the-loop blast with a driving rock beat



Fireworks, parades, certain shows and festivals are on selected dates and are subject to weather conditions and changes. Attractions, entertainment, shops and restaurants may be closed, modified, delayed or cancelled without prior notice. For any additional information, please contact us. (1) The end date of the Star Wars™ theming has not been confirmed at the time of printing. Please contact us for more information. (2) For your future enjoyment, this attraction will be closed for refurbishment for a certain period of time during the validity period of this brochure. Please contact us for dates of closure.



Must-sees and dos

FAMILY ADVENTURES

At Disneyland® Park and Walt Disney Studios Park®, you'll find unforgettable shows and breath-taking attractions for the whole family. Here's a little teaser:

Disney Illuminations⁽¹⁾ — Light up your night with our stunning show

Disney Stars on Parade⁽¹⁾ ① — Fill up on fun with this star-studded daytime Disney parade

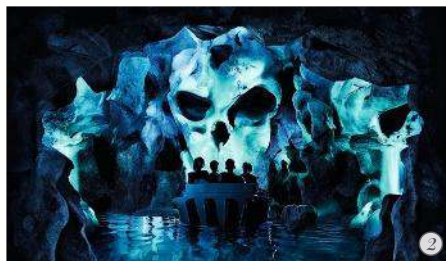
Pirates of the Caribbean ② — Shiver your timbers in this marauding pirate plundering

Ratatouille : l'Aventure Totalemt Toquée de Rémy ③ — Shrink to rat-size in a dazzling chase across a gigantic kitchen

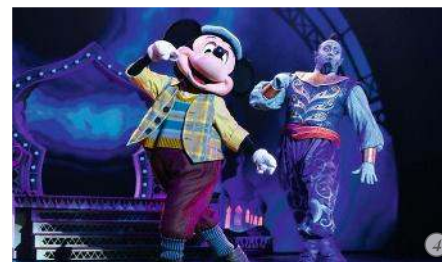
Buzz Lightyear Laser Blast — Blast off into space and help Buzz defeat Zurg in this intergalactic laser-shooting gallery

Mickey and the Magician⁽²⁾ ④ — Gaze in wonder as Mickey and friends master real magic in our award-winning show⁽³⁾


Moteurs... Action! Stunt Show Spectacular ⑤ — A sensational, wheel-screaming Disney stunt show



Please note: some attractions may have height restrictions. And because we're always adding a little more shine and magic to Disneyland® Paris for your future enjoyment, so we'll be busy at work refurbishing some of our attractions, adding that little extra sparkle to each one. Please contact us, your travel agent or check our website for details.



DISNEY CHARACTER ENCOUNTERS

For more information on where to meet some of your most-loved Disney Characters, check our mobile app or be sure to grab one of our 'Guide to the 2 Disney® Parks' as well as the "Programme" available at the Disney® Parks entrance (look for this symbol ).





Adventures *after dark*

Just because the sun goes down, it doesn't mean the fun has to end. With longer opening hours (especially in the summer), a dazzling night-time spectacular and exciting evening entertainment — there's no end to your Disney adventures.



DISNEY VILLAGE®

Discover a world of sparkling shows, themed restaurants and amazing shops — all just a few steps from the Disney® Parks.

Find gifts, souvenirs, fashion, collectibles and more in our jam-packed shops, ① or treat your taste buds to some culinary Disney delights. Don't forget to see seasonal music festivals, live concerts and the biggest Disney dinner show in Europe — *Buffalo Bill's Wild West Show... with Mickey and Friends!** ②



*Check out page 10 for details & conditions.

ENJOY LONGER OPENING HOURS

Several times a year (usually on long summer days), the Disney Parks are open till late so you can enjoy a little extra magic and sparkle ③. Contact us, your travel agent or check our website for opening times.



DISNEY ILLUMINATIONS

Light up your night with our dazzling shows. Gaze in awe at *Sleeping Beauty Castle* as Mickey leads you through our new *Disney Illuminations*, where magnificent fireworks, incredible light projections and stunning special effects bring Disney tales to life like never before — including *Star Wars™*, *Frozen* and *Pirates of the Caribbean*. ④

Until 9th September 2018. Please contact us for information after this date.





Add extra sparkle to a *special occasion*

There's no better place to celebrate something special than here at Disneyland® Paris! From VIP services to delicious treats, we'll bring a little sprinkling of fairy dust to any occasion.

WE'LL BRING THE MAGIC

We want to make sure your Disney stay is as magical as can be. So whether it's a personalised gift delivered to your room, a special request or an exclusive service — your every wish is our command⁽¹⁾.

Disney VIP Guides

Make every minute magical with your very own Disney VIP Guide. With unrivalled knowledge of the Disney® Parks, they'll whisk you off to wherever you want to go in no time at all (ensuring you fit in as many rides as possible). You'll even get to enjoy a special reserved area for our shows and parades. ⁽¹⁾

Party room

Whether it's a birthday, anniversary or some other special occasion, we can transform a room in one of our Disney® Hotels to help you celebrate in true Disney

style. You can choose from a range of surprises, like personalised decorations and an unforgettable encounter with a Disney Character. ⁽²⁾



A DISNEY PRINCESS FOR A DAY

With a princess make-up and hair-styling session, we give little ones a fairytale transformation they'll treasure forever⁽²⁾. ⁽³⁾



A BIRTHDAY TREAT

Give the birthday boy or girl a delicious dessert in one of our restaurants ⁽⁴⁾. Or, you can book your dessert to be served during one of our Disney Character meals (look at page 10 for more info)⁽³⁾.

Price per dessert (for up to 8 persons): £31 (€35)



⁽¹⁾ For further information, contact the Disney® Special Activities team by email on: dlp.Disney.Special.Activities@disney.com
⁽²⁾ This service is only bookable onsite. An extra charge applies. ⁽³⁾ To order a birthday dessert, you must pre-book your table by calling our Dining Reservation Service on +33 1 60 30 40 50 (international call rates apply). • The birthday dessert proposed at the time of printing is a chocolate-orange cake. It may be replaced by another type of dessert during the validity period of the brochure.



© Villages Nature Paris 4

Take time to explore more

Beyond the Disney® Parks, there's even more to discover. Nature-lovers can choose a day in the tranquillity of Villages Nature® Paris, while adventure-seekers can trek through the wild in Davy Crockett's Adventure trail. You're also minutes away from marine magic at Sea Life Aquarium Val d'Europe, non-stop shopping at La Vallée Village and the gorgeous greens of Golf Disneyland.

LA VALLÉE VILLAGE

Come and enjoy a unique shopping experience — just 10 minutes from your hotel and open 7 days a week, all year round. Your hotel concierge will book you a place on our shuttle to this open-air village, where fashion fans can pick up great designer brands. ①

Closed on 1st May, 25th December and 1st January.

SEA LIFE AQUARIUM VAL D'EUROPE

Meet Gentoo and King penguins and immerse yourself in this playful Antarctic experience. Get a closer look at 5,000 amazing marine creatures — including sharks, turtles, sea horses and clown fish.

Open every day, except on 25th December.

DAVY CROCKETT'S ADVENTURE

Follow in the footsteps of Tarzan in this exhilarating adventure, high above Davy Crockett country. Take to the trees for six leafy levels, ideal for everyone from beginners to the very bravest⁽¹⁾. ②

GOLF DISNEYLAND®

Our world-class 27-hole course is great for all levels. Hire your golf equipment at the Pro Shop or simply watch the action from the cosy Club House, perfect for lunch and overlooking the green. ③

Open 7 days a week.



VILLAGES NATURE® PARIS

Just a few minutes from Disney® Parks, discover five unique and immersive worlds, to live unforgettable experiences. The Aqualagon, one of Europe's largest water parks, the Extraordinary Gardens full of many surprises, take care of the animals at the BelleVie Farm, explore the Forest of Legends and its enchanted trees, and treat yourself at the lakeside Promenade! ④

Open 7 days a week

Price for a 1 day entrance⁽²⁾: from £35 (€40) per adult / from £26 (€30) per child (3-11 years incl.)⁽³⁾



(1) Check the opening days and hours at your hotel concierge or visit aventure-aventure.com for more information before your arrival. Located next to the Disney's Davy Crockett Ranch. Please note: There is no shuttle service from/to the activity. 15 minute drive from a Disney Hotel. Paying activity operated by Paris-Est Aventure. (2) Price valid during Low season. Please contact us, your travel agent or check our website for the seasonal pricing calendar and a complete overview of the applicable prices. (3) Free for children under 3 years old.



You're *oh-so-close* to Paris

Paris, the city of romance, is right on your doorstep — and you can reach it easily by car or regional train. But if you want to add a little Disney magic, then why not book one of our four enchanting excursions to this legendary city...

NEW! “PARIS EIFFEL TOWER TO NOTRE-DAME”

Operated by MAGIC WAYS

Eiffel Tower visit with welcome + river cruise + free time in Notre-Dame area (lunch box included)⁽¹⁾ ①

Price per adult: £114 (€129) / Price per child⁽²⁾: £96 (€109)



“MAGICAL DAY TOUR OF PARIS”

Operated by PARISCityVISION

City tour + Eiffel Tower or Louvre Museum visit + cruise. ②

Price per adult: £93 (€105) / Price per child⁽²⁾: £66 (€75)



“PARIS ILLUMINATIONS AND EIFFEL TOWER”

Operated by PARISCityVISION

Evening city tour + Eiffel Tower visit. ③

Price per adult: £79 (€90) / Price per child⁽²⁾: £66 (€75)

“PARIS ESSENTIALS”

Operated by MAGIC WAYS

City tour on a hop-on, hop-off bus + free time. ④

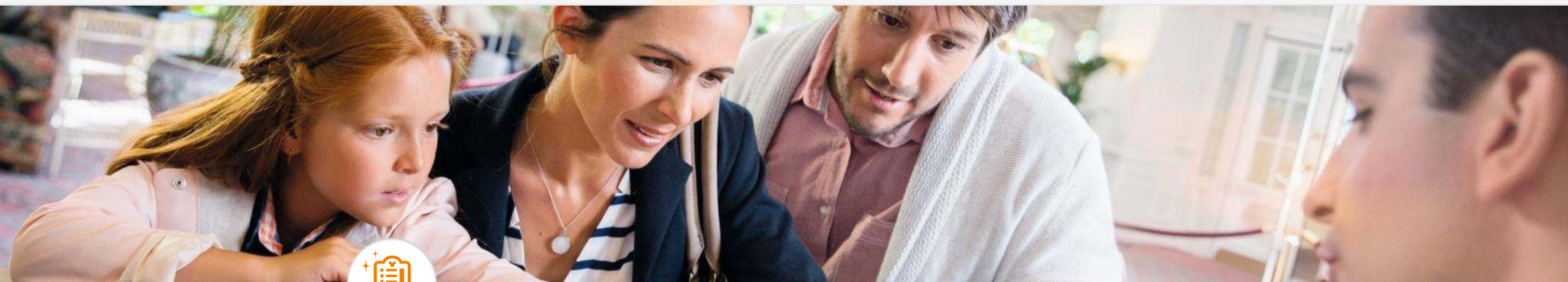
Price per adult: £60 (€68) / Price per child⁽²⁾: £42 (€48)



All of our excursions include:

- A city tour and/or a cruise with English commentary
- A trilingual host(ess) speaking English, French and Spanish
- A return trip to/from Disneyland® Paris

Guaranteed departure regardless of the number of participants. The extras presented on these pages must be pre-booked with your hotel package and are subject to availability at time of booking. Prices of these options are valid from March 21st to November 6th 2018 inclusive. For all applicable conditions and for information from 7th November 2018, please contact us, your travel agent or check our website. (1) Food restrictions and allergies cannot be taken into account. Lunch box included only for adults and children (from 3 to 11 years included). (2) Children 3-11 years inclusive. Please note: excursions are free for children under 3 years, but booking is compulsory.



Any extra *requirements*

We want you to have the most magical experience possible here at Disneyland® Paris, so if you have any special requirements — we're here to help. Here are the important bits you need to know:

GUEST WITH SPECIAL NEEDS

You can download the Disney Parks' Accessibility Maps from the 'Guests with Disabilities' section of our website, or pick one up when you arrive at Donald Desk, City Hall or Studio Services. Guests with a temporary medical condition (medical conditions that have not resulted in them being officially registered as disabled) and expectant mothers are entitled to an easy access card. Disabled guests (who are officially registered as disabled) are entitled to a priority access card. Please, familiarise yourself with the risks and ways to access our attractions before you get here.

Let us know your requirements when you book, and we can help you pick the perfect room. All of our hotels are set up for mobility-impaired guests with various rooms specially adapted to meet the needs of those in wheelchairs. Disneyland® Paris is unable to reserve specialist medical equipment. If you require equipment of this nature, please call our holiday experts (see details on p. 20).

SPECIAL DIETARY REQUIREMENTS

Food Allergies

At Disneyland Paris, we work with nutrition specialists to provide specially adapted meals for guests with allergen-free diets. If you would like to have lunch or dinner at one of our table service or buffet-style restaurants, please, make a reservation in advance by calling our Central Restaurant Reservation Service on +33 (0) 1 60 30 40 50 — just let us know which foods you are allergic to. You can also download our guide on food allergies from the "Guests With Special Dietary Needs" section of our website.

Other Dietary Requirements

Most restaurants offer no sugar, low-fat, low-sodium and vegetarian options (some of these upon request). If you have lifestyle dietary requests — just discuss with your server at your restaurant.

NON-SMOKING POLICY

The Resort's restaurants, bars and shops as well as the Disney® Parks' and Disney Hotels' covered and uncovered areas are non-smoking, except for designated outdoor areas specially created and equipped for smokers. These non-smoking regulations also apply to electronic cigarettes.

SAFETY GUIDELINES

Children under the age of 12 must be accompanied by a responsible adult for ticket purchase and entry to the Disney Parks and supervised at all times. Disneyland Paris reserves the right to refuse attraction access to children under 7 years of age if they are not accompanied by an adult. Unaccompanied children may have their height and age checked at attraction entrances.

For safety reasons, access to and participation in certain attractions requires that you should be in good health, not pregnant, and free from high blood pressure, heart, back or neck problems, motion sickness, or any other condition likely to be

aggravated by these adventures. Height restrictions apply. The configuration of the seats and safety systems on attractions may not allow access for visitors of certain body shapes or sizes.

Animals are not permitted inside Disneyland Paris, except assistance animals, under the condition that they are always kept on leashes and under the control of the owner. The following items may not be brought into Disneyland Paris: any object or toy having the appearance of a firearm (laser gun, water gun etc.); any mask worn by Guests of 12 years of age or older (except for medical reasons); or any clothing trailing on the ground. For safety reasons, we also reserve the right to visually inspect or use security scanning equipment on your clothing, coats and personal belongings before entry and/or inside Disneyland Paris especially for Guests wearing multi layered costumes that cover the entire body.

You must respect Disneyland Paris regulations. To learn more prior to your visit, go to DisneylandParis.com. Disneyland Paris rules are also posted at the entrance of Disney® Parks, Disney Hotels and Disney Village®.

Disneyland® Paris would like to thank its Official Partners*:



* Official Partners at the time of printing.



NEED TO KNOW MORE?

For magical holiday advice and further information (on Disney® Parks opening hours, shows schedules, attractions, season, events and much more!) you can check our website, contact your travel agent or call one of our holiday experts: these experts speak your language and nobody knows the magic better!

Before your arrival:



Visit our website **DisneylandParis.com**
• Get a complete overview of our destination
• Register online to see our latest news



Ask your Travel Agent for details or call a Disneyland® Paris holiday expert:
UK: **08448 008 111**⁽¹⁾
Ireland: **01 605 83 83**⁽²⁾
Other countries: **+33 1 60 30 60 53**⁽³⁾



Contact our holiday experts on **Facebook Messenger**⁽⁴⁾ and **Twitter @DLPHelp**⁽⁴⁾.
And for a daily dose of magic, follow us on:
f **@disneylandparis** **@DisneyParis_EN**

And during your stay:



Ask at the information desk of your hotel



Ask our Cast Members (Disney employees)



Ask at the concierge desk of your hotel



Download our mobile app! See pp. 2-3 for details.

Calls may be monitored or recorded for training purposes. (1) Calls cost 5p per min plus your phone company's access charge. (2) National call rates apply. Cost may vary according to network. (3) International call rates apply. (4) Opening times: Monday - Friday from 9.00am to 7.00pm, Saturday from 9.00am to 5.30pm. Please note that opening hours are subject to change.